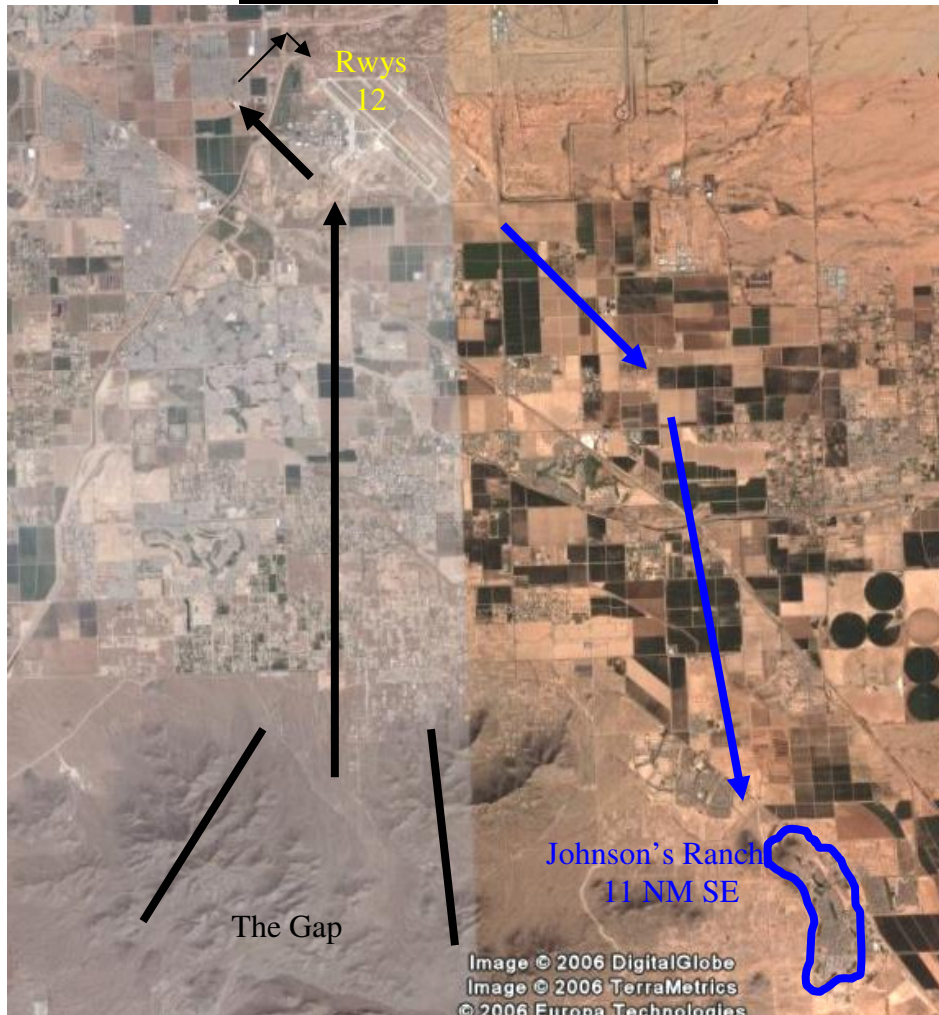


Arrival and Departure Procedures LOA



RUNWAYS 12 IN USE



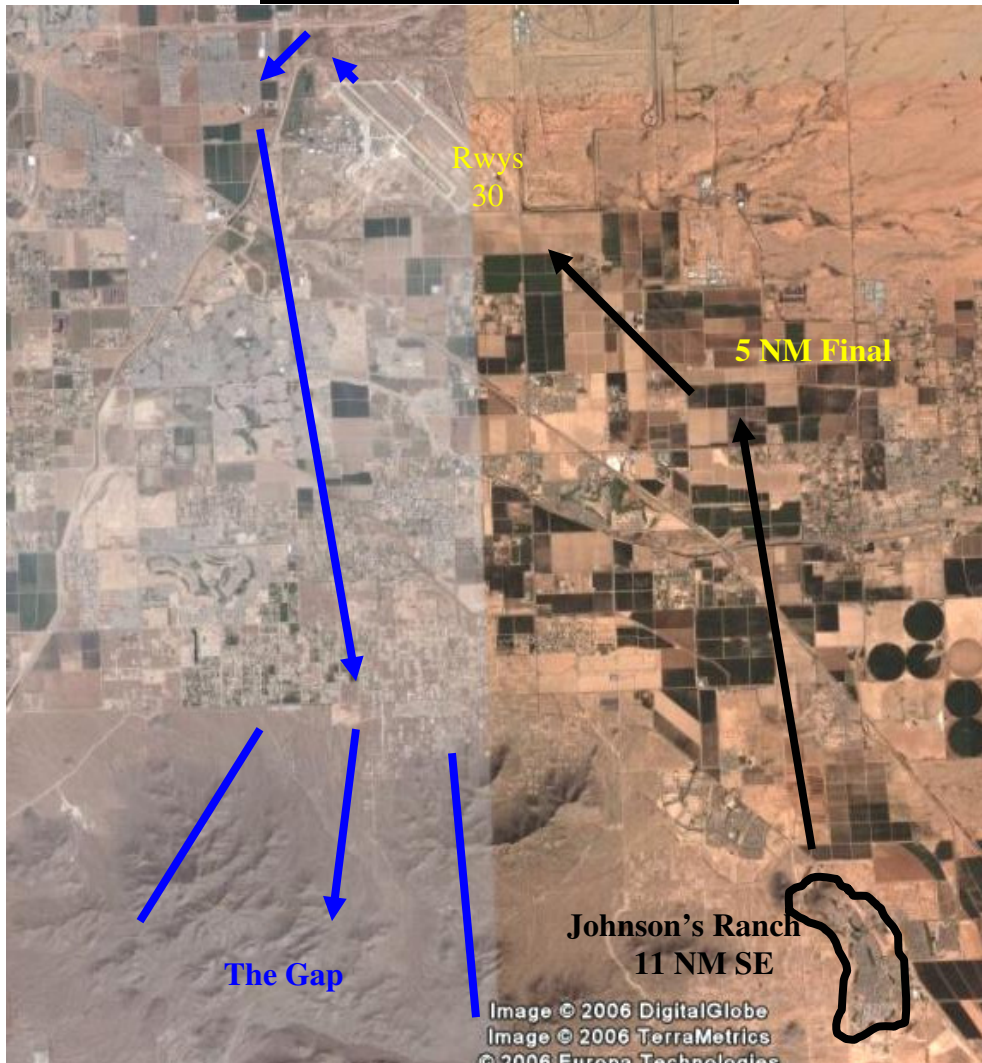
JOHNSON'S RANCH DEPARTURE- 10 NM SE of IWA

- On initial call to KIWA ground control, for direction of flight, request "Johnson's Ranch Departure"
- Continue runway heading until 300 feet below TPA, then turn right towards Johnson's Ranch
- Ensure your departure heading does not interfere with opposite direction inbound traffic to runway 30C
- Depart KIWA class delta airspace at 3,000 MSL
- Once out of KIWA class delta airspace, continue climbing to pass over Johnson's Ranch and proceed on course

THE GAP ARRIVAL- South of KIWA just east of Santan Peak

- Enter from the south through The Gap and report location to KIWA tower as "The Gap"
- Proceed northbound expecting a right downwind entry for runways 12
- Enter KIWA's class delta airspace at TPA

RUNWAYS 30 IN USE



THE GAP DEPARTURE- South of KIWA and just east of Santan Peak

- On initial call to KIWA ground control, for direction of flight, request “Gap Departure”
- Turn crosswind when over Hwy 202 or 300 feet below TPA, whichever occurs first
- Proceed south towards The Gap and exit class delta airspace at 3,000 MSL
- Once out of class delta airspace, continue climbing to proceed through The Gap and proceed on course

JOHNSON’S RANCH ARRIVAL- 10 NM Southeast of IWA

- Enter over Johnson’s Ranch, once over the Fry’s Grocery report location to KIWA tower as “over Johnson’s Ranch”
- Proceed northbound to a 5NM final and expect straight-in approach for Rwys 30
- Enter KIWA’s class delta airspace at TPA
- For avoidance of Large and Heavy overtake situations be prepared for a westbound turn towards Pegasus followed by a base entry

MISC. REPORTING POINTS **EITHER RUNWAY IN USE**

TO AND FROM THE NORTHEAST

- *Either runways are in use (12 or 30):*
 - Arrivals
 - Enter through, and report, “Apache Junction” expecting a midfield downwind entry
 - Pass over Apache Junction at or below 3,000 MSL and enter KIWA’s class delta airspace at TPA
 - Departures
 - On initial call to KIWA ground control, request “Apache Junction” departure
 - Aircraft depart through “Apache Junction” and continue to the northeast
 - Depart KIWA’s class delta airspace at 3,000 MSL

TO AND FROM THE WEST

- *Either runways are in use (12 or 30):*
 - Arrivals
 - Enter through, and report, “Bank of America”
 - Departures
 - Aircraft depart through “Bank of America”
 - Exit/enter at 2,600 MSL

TO AND FROM KCHD OR KFFZ

- *Either runways are in use (12 or 30):*
 - Arrivals
 - Enter, and report from, “Chandler” or “Falcon Field” at TPA
 - Departures
 - On initial call to KIWA ground control, request “Chandler” or “Falcon Field” departure
 - Aircraft depart to “Chandler” or “Falcon Field” at respective TPAs