


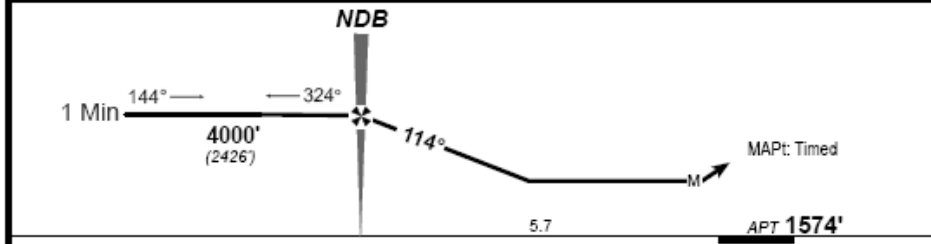
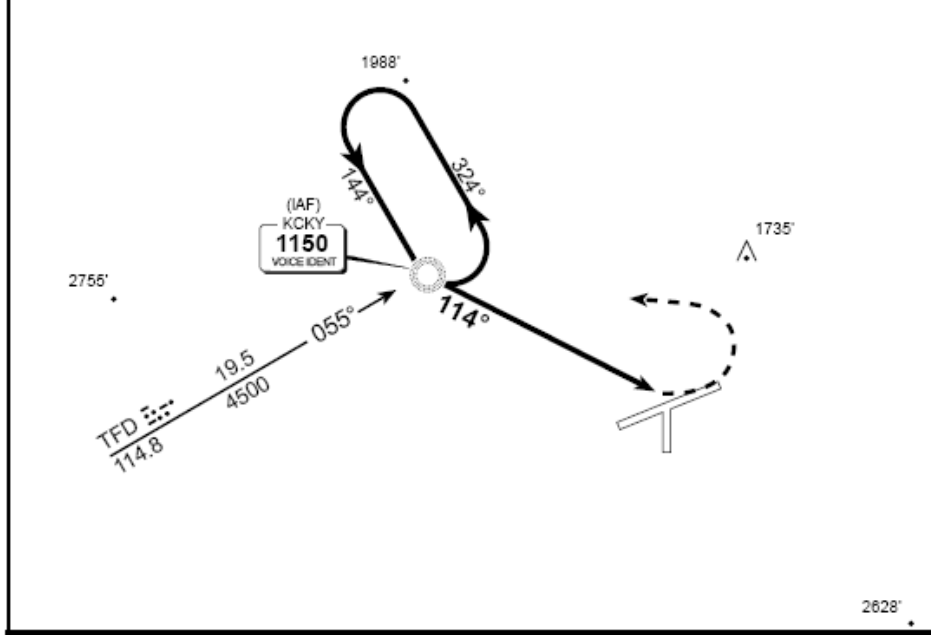
P08  
COOLIDGE MUN


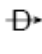
JUN 08

COOLIDGE, ARIZ  
NDB-A

CASA GRANDE AWOS 132.17	ALBUQUERQUE Center 125.4	KCKY Traffic 122.85	COOLIDGE UNICOM CTAF 123.075
NDB KCKY <b>1150</b>	Final Apch Crs <b>114°</b>	Minimum Alt NDB <b>4000'</b> (2426')	MDA(H) <b>2180'</b> (606')
Apt Elev <b>1574'</b>			 5700' MSA KCKY NDB
<b>MISSED APCH:</b> Climbing LEFT turn to 4500' direct to KCKY NDB and hold.			
1. Use CAUTION just south of KCKY is AYZUT intersection the IAF for CGZ GPS RWY 23. 2. Use 122.85 (KCKY Traffic) until PT inbound. 3. Avoid parachute drop zone southeast of RWY 5/23. 4. Avoid aerobatic box 1 mile Northeast of the airport. 5. Traffic holding 4500' and above.			

**FOR DAY VFR USE ONLY**



Gnd speed-Kts	70	90	100	120	140	160	<b>4500'</b>  	KCKY <b>1150</b>
KCKY to MAP	5.7	4:53	3:48	3:25	2:51	2:26		

		CIRCLE-TO-LAND	
		Max Kts	MDA(H)
		90	2180' (606') - 2
		120	NA
		140	
		165	